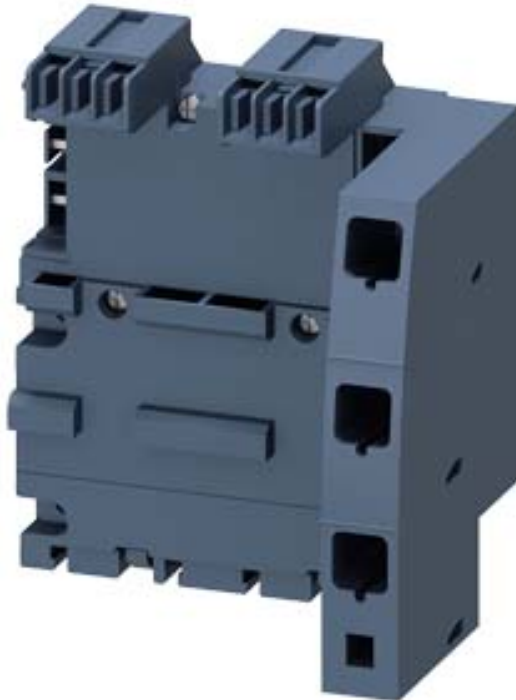


3-PHASE BUSBAR WITH INFEED RIGHT, FOR 2  
CIRCUIT-BREAKERS, SIZE S00 UND S0



General technical data:

product brandname		SIRIUS
Product designation		3-phase busbars with infeed
Design of the product		for 2 switches with infeed on the right
Size of the circuit-breaker		S00, S0
Suitability for use		circuit-breakers 3RV2

Installation/ mounting/ dimensions:

Mounting position		any
Mounting type		snap-on fastening on 35 mm standard rail
Width	mm	110
Height	mm	129
Depth	mm	86.5
Required spacing for live parts		
• upwards	mm	10
• Backwards	mm	0
• at the side	mm	0
Required spacing for grounded parts		
• upwards	mm	10

• Backwards	mm	0
• at the side	mm	0
<b>Required spacing with side-by-side mounting</b>		
• upwards	mm	10
• Backwards	mm	0
• at the side	mm	0

**Certificates/ approvals:**

<b>Certificate of suitability</b>	CE / UL / CSA / CCC
-----------------------------------	---------------------

**Shipping Approval**



ABS

**Further information**

**Information- and Downloadcenter (Catalogs, Brochures,...)**

<http://www.siemens.com/industrial-controls/catalogs>

**Industry Mall (Online ordering system)**

<http://www.siemens.com/industrymall>

**Cax online generator**

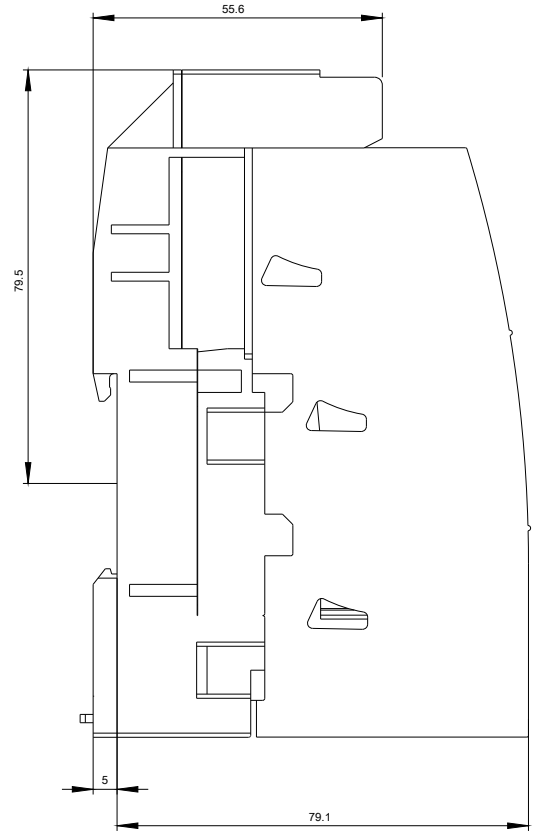
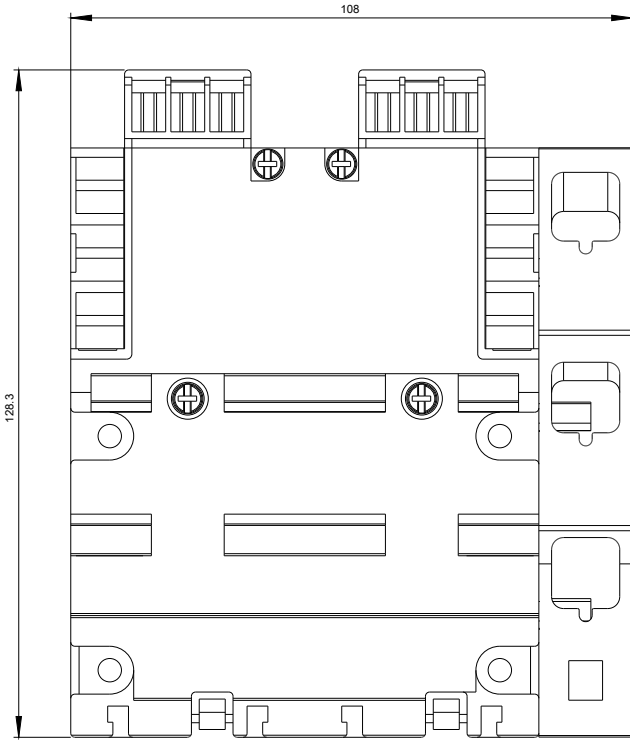
<http://support.automation.siemens.com/WW/CAXorder/default.aspx?lang=en&mlfb=3RV2917-1E>

**Service&Support (Manuals, Certificates, Characteristics, FAQs,...)**

<https://support.industry.siemens.com/cs/ww/en/ps/3RV2917-1E>

**Image database (product images, 2D dimension drawings, 3D models, device circuit diagrams, EPLAN macros, ...)**

[http://www.automation.siemens.com/bilddb/cax\\_de.aspx?mlfb=3RV2917-1E&lang=en](http://www.automation.siemens.com/bilddb/cax_de.aspx?mlfb=3RV2917-1E&lang=en)



last modified:

05/19/2017